

Crossbow 3 and Contra 3: Recommended Bridle Modification. Version 1

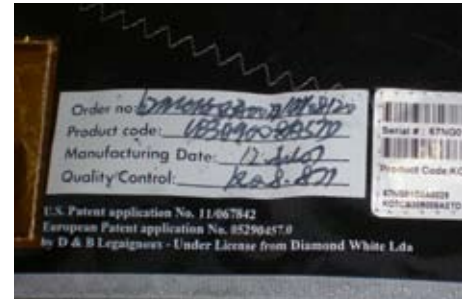
Benefits

The Crossbow 3 and Contra 3 bridle modification, version 1 is a method to increase the turning speed and reduce the bar pressure of the kites.

This modification, if done properly, may also extend the lifetime of the bridle.

Which Kites Need This Modification?

Check the printed manufacturing date on the wing tip of the kite. Some Contra and Crossbow 3 kites made prior to August 7th, 2007 will need this modification to achieve the benefits stated above. A simple way to visually check to see if your kite needs to be modified is to locate the pulley at TP-6. (see illustration on next page).



If the kite needs to be modified, the pulley will be connected directly to the leading edge of the kite using a short larks head connection.



A kite which needs the modification.

If the kite does not need the modification, it will have an extended link which connects the pulley to TP 6.



A kite which doesn't need the modification.

Crossbow 3 and Contra 3: Recommended Bridle Modification. Version 1

Where do I get the necessary parts for the modification?

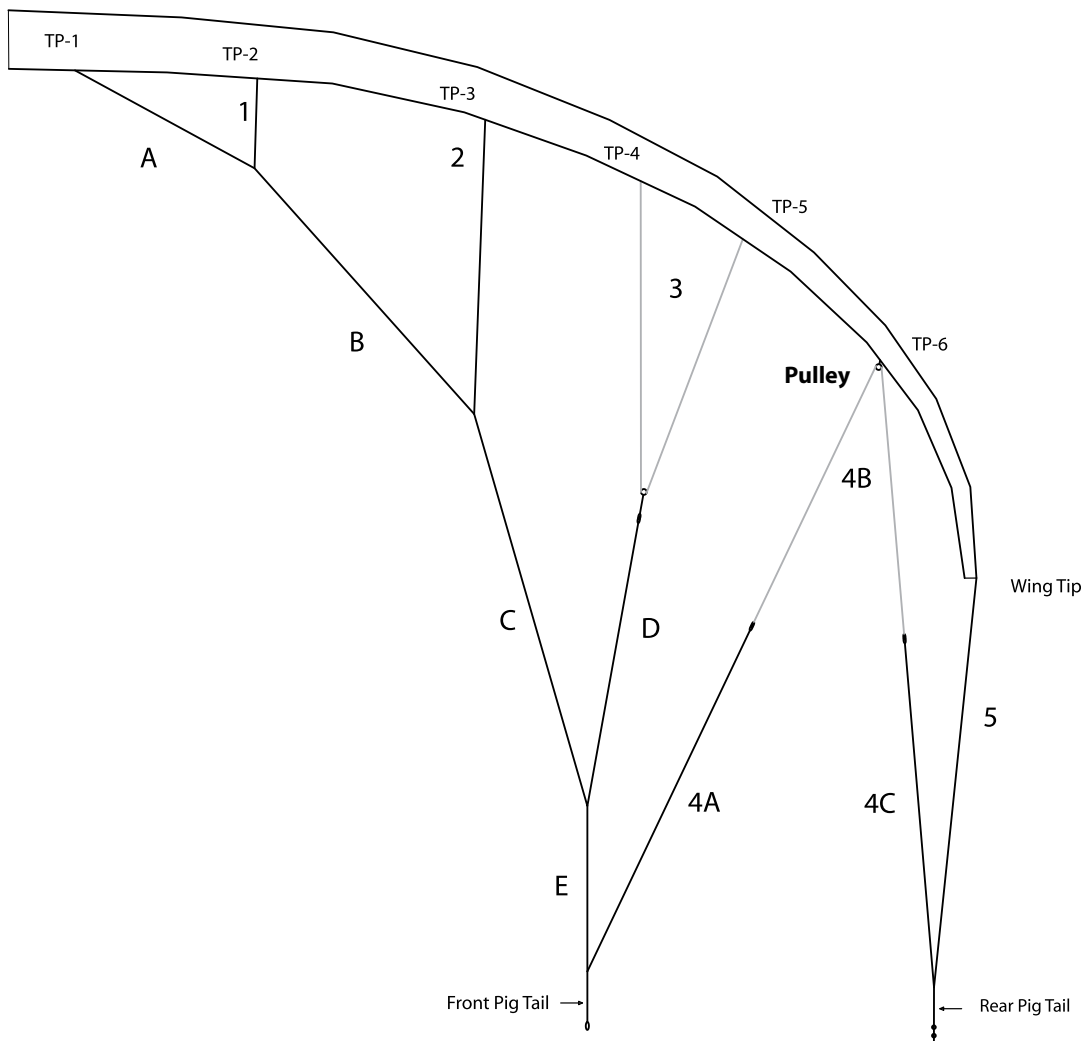
You will only need two 10 cm links which will be provided free of charge from an authorized Cabrinha Dealer.

To locate a dealer near you visit: www.cabrinhakites.com

Bridle Modification Instructions

Follow the simple instructions on the following pages. Use the bridle schematic below to reference the bridle numbers and locations.

2007 - 2008 Crossbow 3 and Contra 3 Bridle



Step 1)
Remove rear pigtail from back cluster.



Step 2)
Disconnect bridle 4c from bridle 4b.



Step 3)
Pull the bridle (4b) line completely out from the pulley.



Step 4)
Remove the pulley from the tow point.



Step 5)
Thread the new link through the loose pulley.



Step 6)
Fold the link in half.



Step 7)
Attach the pulley back on to tow point 6 with a loop to loop connection.



Step 8)
Using a thin line (such as a kite line), thread bridle 4b back through the pulley.



Step 9)
Re-attach bridle 4c to 4b with a loop to loop connection.



Step 10)
Re-attach bridle 4c and 5 to the pig tail.



Step 11)

Repeat steps 1-10 for the opposite side of the kite. Re-attach your flying lines to the kite. Your kite is now ready to fly.

! WARNING

ALWAYS inspect your equipment for signs of wear and tear each time before use, particularly all lines, canopy, bladders, screws and fittings (including pulleys).

IF any products are found to show signs of wear and tear these should be repaired or replaced immediately and before further use. If in doubt about any signs of wear and tear, please contact your local vendor. Contact details are available from www.cabrinhakites.com.

NEVER place yourself in a situation where breakage of any one of the various kitesurfing components would pose a risk to yourself or others, or make it impossible to return to the shore securely and unassisted.

CHECK your gear before going on the water. Insure that your flying lines, security systems, kite, board, etc. are all rigged properly and are in working order.

A frequent inspection of the kite and the control system should be made in order to identify punctures, tears, or abrasions in the canopy, struts or security systems. It is also necessary to check the fly lines for wear and for unwanted knots, which may reduce the strength of the fly lines.

DO NOT USE THIS PRODUCT UNLESS YOU HAVE READ AND UNDERSTAND THESE WARNINGS, CAUTIONS, AND INSTRUCTIONS WHICH ARE FOR YOUR SECURITY AND PROTECTION. THIS INFORMATION MAY BE SUBJECT TO CHANGE AT ANY TIME. FOR CURRENT UPDATES, PLEASE VISIT OUR WEBSITE AT: WWW.CABRINHAKITES.COM.